

Science ∞ Technology ∞ Society
Wissenschaft ∞ Technologie ∞ Gesellschaft

Any
Questions?

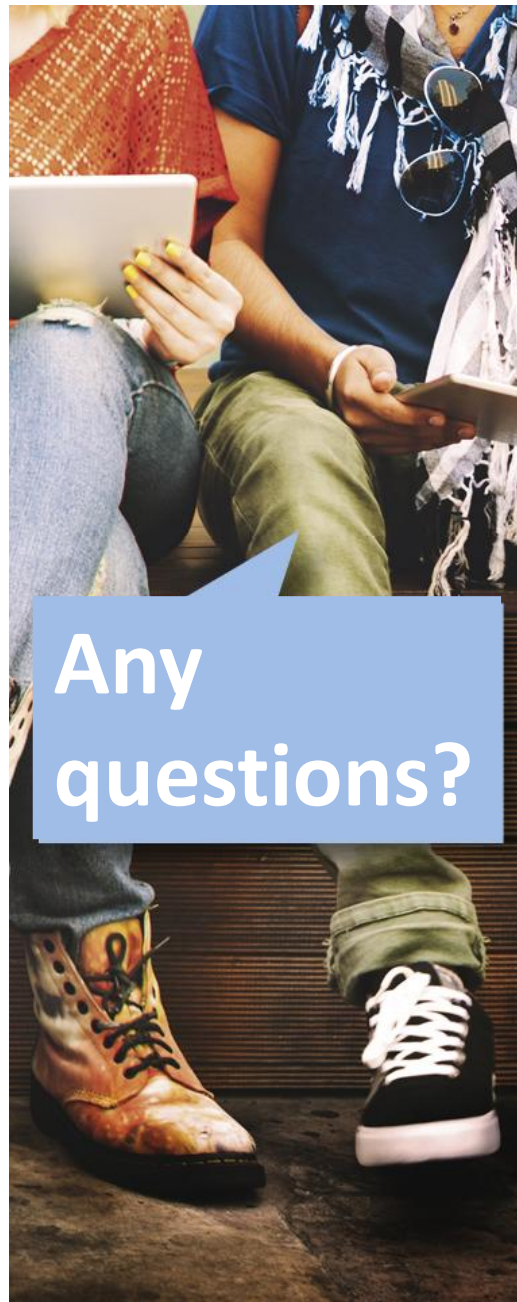
Certainly.
We have some too.
You even get **Credits** for it.

Kontextlehre WTG

Courses offered by TUM School of Social Sciences and Technology



Any
questions?



Any
questions?



Any
questions?

More reflectivity,
more diversity,
more creativity



Any
questions?

How can different disciplines cooperate?

Am I using the right methods?

How can the consequences be assessed?

What do **Science** ⌘ **Technology** ⌘ **Society**
have in common?

Seminars and workshops in the
Kontextlehre WTG help you think ahead!



Any
questions?

Supplement your studies with **interdisciplinary MODULES**

from **6 subject areas:**

- Fundamentals & Diagnoses
- Media & Public Relations
- Politics & Economics
- Ethics & Social Sciences
- Art & Culture
- Methods & Procedures

with **3 focus areas:**

- **explore! (basic knowledge)**
Introductions & Overviews
- **apply! (practical knowledge)**
In-depth information & Fields of application
- **act! (competence knowledge)**
Working methods & Techniques

Kontextlehre WTG is offered by
TUM School of Social Sciences and Technology.



tum.culture.arts

66 Beiträge

829 Follower

104 Gefolgt

TUM Center for Culture & Arts

Official account of the TUM CCA. Welcome! 🗨️ 🌍 🎨 🗣️

🔗 www.tum.de/ccs und 1 weitere



Civilization



TUM tanzt!



HeavensCaro...



TUM goes M...



CITY NOW



KafkasKreatu...



in Concert 🎵

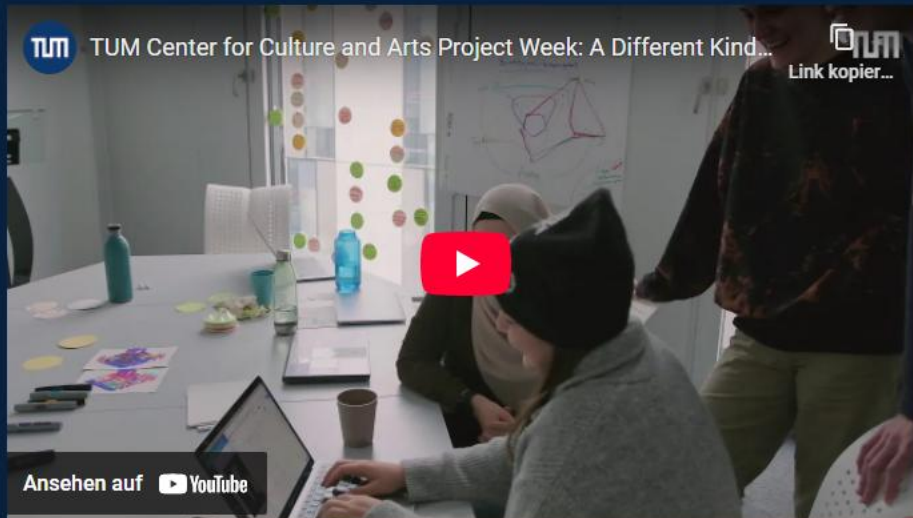


Winter semester 24/25

Courses for students

Seminars, creativity labs and excursions: Here students discover their creative and cultural curiosity, and gain credits for their degree while exploring less familiar fields of knowledge. This offer is part of the general skills teaching program "[Science](#) [Technology](#) [Society](#) (Kontextlehre WTG)" [\[↗\]](#) as well as the [English Department at the TUM Language Center](#) [\[↗\]](#). Learn more about the semester highlights of the course offer via the newsletter: [subscribe](#) [\[↗\]](#)

Courses in English



Explore



Apply



Act



www.tum.de/cca



www.tum.de/cca



Per Anhalter durch die Galaxis?

Project Week

Ideen, Irritationen, Inspirationen zum Leben in der Zukunft

A Different Kind of Game Jam!

EN

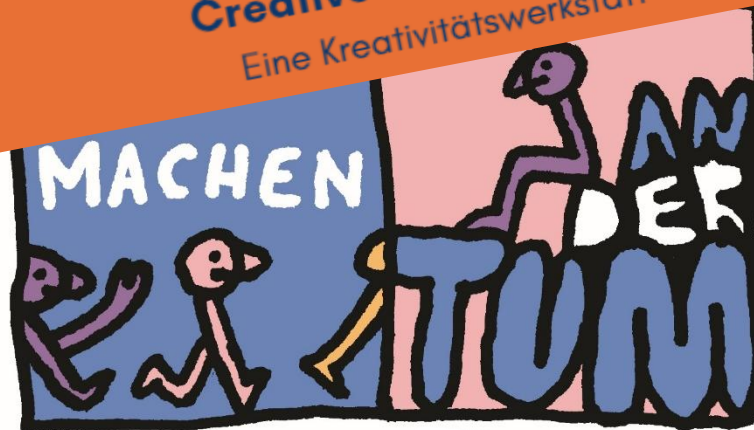
Project Week

Reflecting Science, Technology and Society through Game Design

Creative Mind Change

Project Week

Eine Kreativitätswerkstatt



www.tum.de/cca

Any questions?



ETHICS & SOCIAL ISSUES

What does responsibility mean in autonomous systems? **Are there moral machines?** Are human rights in danger?

EXAMPLES WINTER SEMESTER 25/26

act!

- Come Together! - Inter/Cultural Practice for Locals, Foreigners and World Inhabitants
- Dialogue Matters

POLITICS & ECONOMICS

How are research and development politically governed? How can inventions be protected?

EXAMPLES WINTER SEMESTER 25/26

explore!

- Human dignity in the age of artificial intelligence (Menschenwürde im Zeitalter der Künstlichen Intelligenz, in German)



Any
questions?

MEDIA & PUBLIC RELATIONS

How are science and society changing as a result of digitalization? How does professional science communication work? [How can I present complex issues in an appealing way?](#)

EXAMPLES WINTER SEMESTER 25/26

apply!

- Hands-On SciCom: Experiment-Driven Science Communication

act!

- Engineer Your Text! Technical Writing for People Who Want More
- Rhetoric and Argumentation. An Academic Talking Lab

Any
questions?

Knoten-Bezeichnung

- [-] [20161] Bachelor Bauingenieurwesen
 - [+] Grundlagen- und Orientierungsprüfung
 - [-] Bachelorprüfung
 - [+] Pflichtbereich
 - [+] Wahlpflichtbereich
 - [+] Wahlbereich
 - [-] Studienleistungen
 - [-] [BGUQUAL1] Überfachliche Qualifikation (Allgemeinbildende Fächer)
 - [-] Modulangebot Carl von Linde Akademie
 - [+] [ED0289] Einführung in die Wissenschaftstheorie
 - [+] [CLA90331] ASTA- und Fachschaften-Projektarbeit
 - [+] [CLA11201] Bachelorarbeiten professionell erstellen
 - [+] [CLA21202] BASIC-Leadership – Training für Berufseinsteigerinnen und Doktorandinnen
 - [+] [CLA10800] Betriebswirtschaftlich Denken
 - [+] [CLA20803] Cognitive Science: Denken, Erkennen und Wissen
 - [+] [CLA10555] Communication and Facilitation in Project Teams
 - [+] [CLA10509] Creative Problem Solving
 - [+] [CLA21203] Das ökonomische Wissen der Literatur
 - [+] [CLA30704] Denken, Erkennen und Wissen
 - [+] [CLA20704] Denken, Erkennen und Wissen
 - [+] [CLA21206] Der Irrtum
 - [+] [CLA21004] Die Gebrauchsanweisung
 - [+] [CLA20705] Diversität und Konfliktmanagement
 - [+] [CLA21204] Dynamik und Rollen in der Gruppe verstehen und gestalten
 - [+] [CLA30606] Ein moralisches Angebot
 - [+] [CLA20707] Einführung in Change Management
 - [+] [CLA21209] Einführung in das wissenschaftliche Arbeiten
 - [+] [CLA31104] Einführung in die Wissenschaftssoziologie
 - [+] [CLA21005] Einführung in Diversity Management
 - [+] [CLA21023] Entspannt Prüfungen bestehen
 - [+] [CLA14240] Erfolgreich im Internet schreiben

Certainly.

We have some too.

You even get **Credits** for it.

Wie erreiche ich gute wissenschaftliche Praxis?

Wie gesichert ist unser Wissen über die Welt?

Wie beeinflussen sich Gesellschaft und Forschung gegenseitig?

Wissenschaft & Technologie & Gesellschaft

WTG@MCTS
Arcisstraße 21
80333 München

Tel. +89.289-
wtg@mr

...en?
...studierende
...zur LV-Anmeldung
...ZU: Prüfungsanmeldung

Grundlagen & Diagnosen

→ Basiswissen → Praxiswissen → Kompetenzwissen

In einer komplexer werdenden Welt ist fachübergreifendes Or
Grundlagen der Gegenwart aufschließt und für die Hera
verschiedenster Disziplinen muss in einen Zusammen

agt, das die historischen
unft sensibilisiert. Das Wissen
[mehr]

Lehrveranstaltungen im Winter

7/18

Basiswissen

Wissenschaft und Gesellschaft

...aft?

Maasen

Technik, Natur und

Zachmann

Geschichte der Neuzeit

Zachmann

Technikphilosophie Einführung

Slanitz

Kollektives Handeln in soziotechnischen Systemen

Thürmel

Mensch, Maschine und Interaktion Subversive und konstruktive Beziehungen zwischen Mensch und Maschine

Tremmel, Slanitz

Einführung in Kants "Kritik der reinen Vernunft"

Jung

www.sot.tum.de/wtg

FAQ



Any
questions?

- How long do the courses last?
- How many ECTS credits are awarded per workshop?
- How many places are available per course?
- How are these distributed?
- Which platform are the online courses offered on?
- Are there also courses in English?

follow
[@tum.culture.arts](https://twitter.com/tum.culture.arts)

Any
 questions?

Any
 questions?

Always up to date – **Subscribe to our newsletter now:**
<http://go.tum.de/550089>

Kontextlehre WTG Interdisciplinary qualifications for study and career

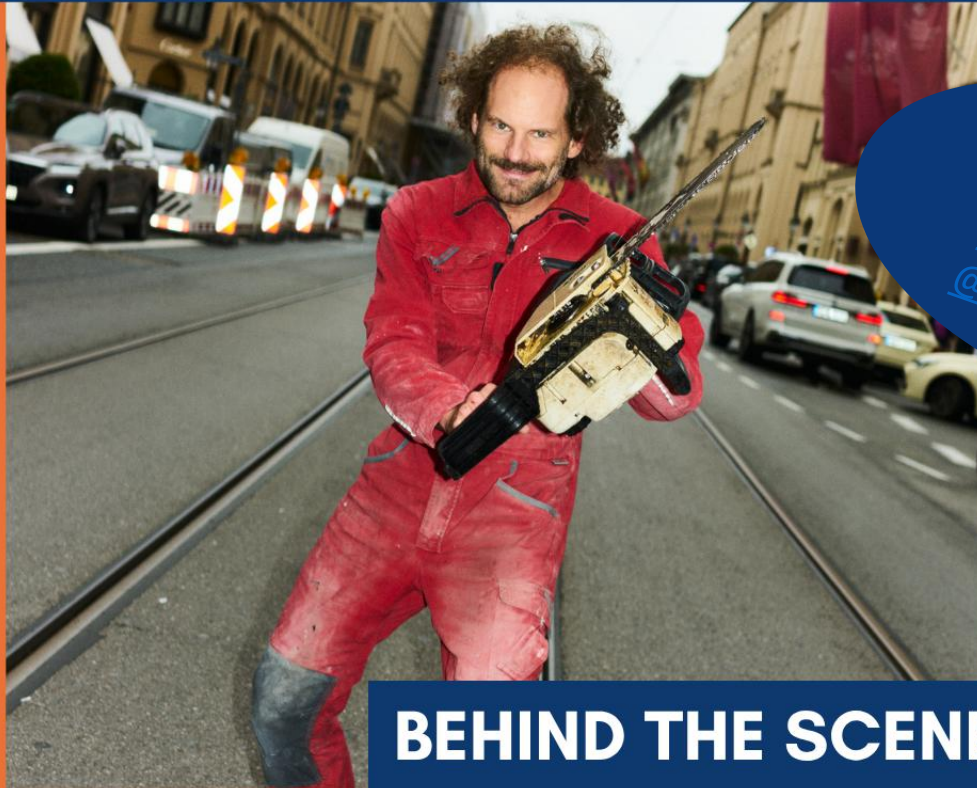
Any
questions?

An orange oval containing contact information.

www.tum.de/cca
@tum.culture.arts

www.sot.tum.de/wtg

TUM goes KAMMERSPIELE



Stay tuned for
registration link!
www.tum.de/cca
[@tum.culture.arts](https://twitter.com/tum.culture.arts)

BEHIND THE SCENES

EN

mo 10.11 6:30 p.m.

📍 Münchner Kammerspiele