

TUM Master's Days: Doing your Doctorate at the Technical University of Munich – TUM Graduate School

Marina Schmidt

Public Relations & Internal Communication

TUM Graduate School

Munich, 26 March 2025

welcomeoffice@gs.tum.de

www.gs.tum.de



Some General Facts

The German Doctoral System

Ph.D. System vs. German Doctoral System

Main differences between the Anglo-American Ph.D. system and the German doctoral system

Ph.D. – Structured

- Application deadlines
- Entry tuition fees
- Course curriculum, lectures – program schedule
- Team supervision/ assistance

German doctoral program – Individual

- Independent work on own research subject – no time limits
- Individual supervision
- No admission deadlines or fees



Who We Are

TUM Graduate School

Facts and Figures

(statistics 2023)

9745
members



1670
Intakes in 2023

1139
Graduations in 2023



31%
International
doctoral candidates

Established in
2009



111
different
nationalities



39%
Female doctoral
candidates



**China,
Austria, Italy,
India, Iran**
Top 5 international
countries of origin



TUM Graduate School - Objectives

- Established 2009
- Largest of its kind in Germany with automatic membership since 2014
- Provides a **common framework** for various doctoral schemes (incl. external doctorate) and ensures high quality of doctoral education at TUM
- Gives an **international** perspective – various exchange formats & funding initiatives
- Fosters **interdisciplinary** collaboration – across disciplines, institutions
- Strengthens **scientific and transferable skills** – 300+ courses per semester
- Increases visibility and **networking** of doctoral candidates – identity and involvement
- Provides **career** orientation and promote social responsibility – prepare graduates for international careers



Structure

The TUM Graduate School is organized into

- **Different Graduate Centers for degree-awarding institutions** and interdisciplinary Graduate Centers
- **Management Office** at TUM Campus Garching
- **Graduate Dean** as a member of the TUM Extended Board of Management
- **Graduate Council** as representative body of all doctoral candidates at TUM

Your **School Graduate Center** is your **first point of contact** for doctoral admission and school-specific requirements.





TUM Graduate School (TUM-GS)

TUM-GS Management Office

Graduate Centers

GC-CIT

GC-ED

GC-LS

GC-MGT

GC-MH

GC-NAT

GC-SOT

GCS

IGSSE

HELENA

CREATE

Graduate Centers of Degree-Awarding Institutions
(TUM Schools & TUM Campus Straubing)

Further Graduate Centers

Doctorate @ TUM

The TUM doctoral model

Application procedure

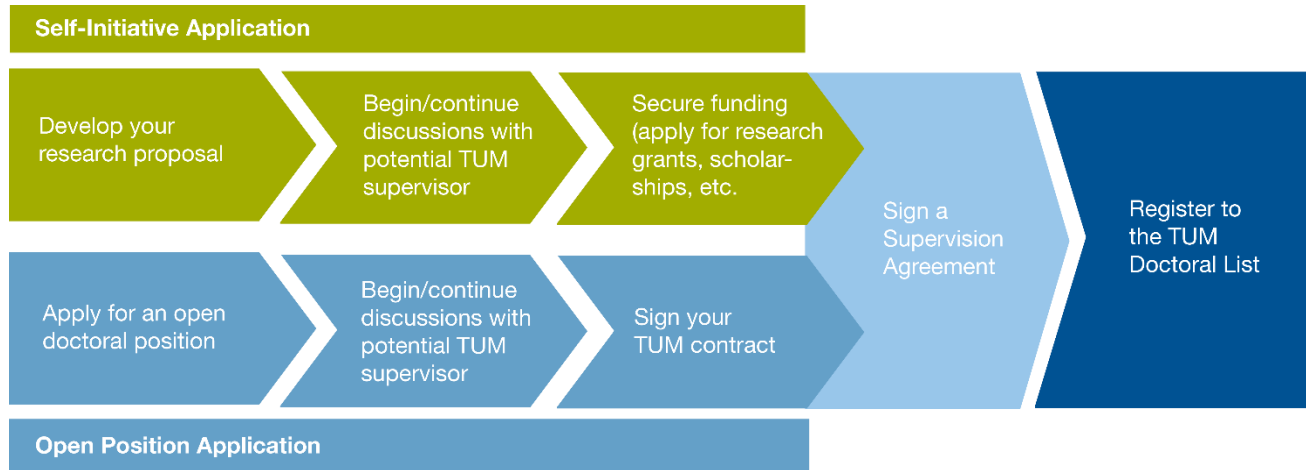
Inform yourself about the research portfolio at TUM:
<https://www.tum.de/en/research/schools-departments>

Visit
<https://www.gs.tum.de/en/gsaplicants/application/application-steps/> for guidance on how to find a supervisor and how to compose a research proposal

Excellent Master's degree in a related subject

No general language requirements for doctoral admission (requirements to be defined by doctoral supervisor)

A TUM professor to supervise your doctoral research



Job openings:
<https://www.tum.de/en/about-tum/working-at-tum/open-positions>



Photo: Pexels

Application for a doctorate at TUM - Prerequisites

1) Excellent **Master's Degree**

- GPA of **2.5** or better

*If you have a foreign Master's Degree, it should be a 2-year degree following a subject-related Bachelor's Degree (300 ECTS total Bachelor's and Master's Degree), completed with an **examination** and an **independent academic thesis**

+ A non-German Master's Degree must be recognized as equivalent to a German Master's Degree

!Final decision & possible conditions set by the Dean's Office!

2) Fluency in **English** (German not needed but a plus; depends on the research group)

3) **A TUM professor who supervises the doctoral research**

4) **Funding** (secured funding preferable but not required for admission)

Funding a Doctorate

Employment at TUM:

Research associates are employed at a TUM research group. Available positions on the TUM website and/or website of the research group.

Scholarship/ Grant:

Scholarship holders finance their doctorate with funding from an external organization. No TUM scholarship programs.

External Doctorate:

Candidates work for a company or an external research institution while being supervised by a TUM professor.

- Work closely with supervisor who is also the boss
- Involves teaching and administrative tasks
- Part of TUM research staff with access to staff development facilities

- Active participation in the academic environment of TUM required
- Often more freedom in choosing the research topic and more time for research

- Active participation in the academic environment of TUM required
- Less integration into the daily-business of the TUM research group



With more than 10,000 members, thanks to its comprehensive, university-wide format, TUM Graduate School is the largest of its kind in Germany.

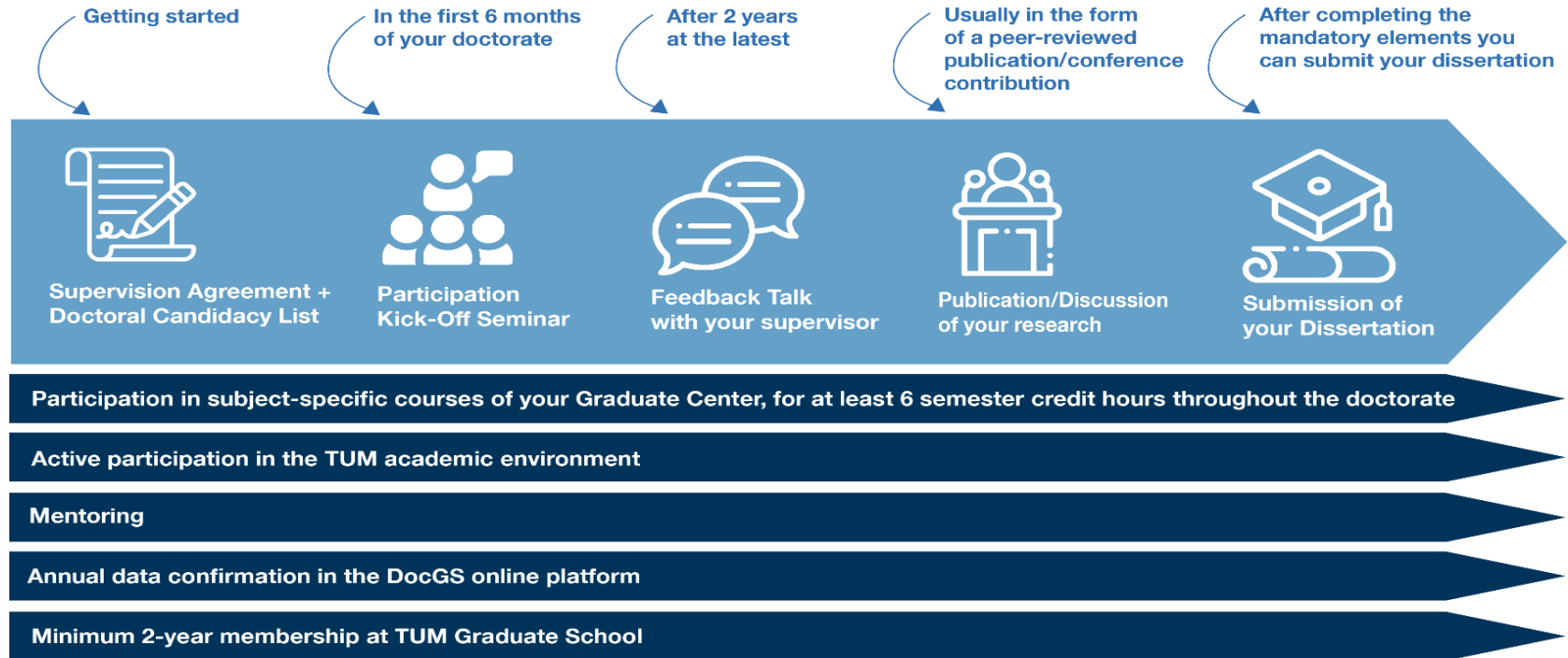
The unique TUM doctoral model combines the benefits of a traditional individual doctorate and that of structured doctoral programs.

The TUM doctoral model

The TUM doctoral model ensures **independent research** while providing a **structuring framework** and extensive training opportunities. Each member can design the doctorate based on his*her individual needs.



Framework & Mandatory Elements of your Doctorate at TUM



Icons: Flaticon - Freepik, Iwito Studio, Juicy Fish

The TUM doctoral model

The TUM doctoral model ensures **independent research** while providing a **structuring framework** and extensive training opportunities. Each member can design the doctorate based on his*her individual needs.



Subject-specific qualification

The Graduate Centers offer a diverse range of courses for subject-specific further qualification – the ideal way for doctoral candidates to **supplement and deepen their independent academic work**.



Subject-specific qualification

- Available at the research groups, departments and schools
- Training at the intersection of engineering, natural sciences, health sciences and social sciences
- Scientific courses and training at international partner institutions
- Good Scientific Practice

The TUM doctoral model

The TUM doctoral model ensures **independent research** while providing a **structuring framework** and extensive training opportunities. Each member can design the doctorate based on his*her individual needs.



Transferable Skills Training

Doctoral candidates can choose from **numerous tailored courses to expand their transferable skills**, enabling them to improve their research methods and gain valuable orientation for next career steps.



Transferable Skills Training

Elevate your potential with the TUM-GS Transferable Skills Training

- 70 + courses per semester
- 43 % courses in English
- 45 % online courses
- 1.000 participants each year
- 95% of all participants recommend our courses



Icons: Freepik, Designing Hub
via Flaticon

Kick-Off Seminar

- 15–17 Kick-off Seminars p.a.
- 80-100 doctoral candidates across all disciplines in each Kick-Off Seminar

Goals:

- Interdisciplinary **exchange and networking**
- Get to know **TUM and its resources**
- Transferable skills training

Fixed program parts:

- Intro to **Good Scientific Practice**
- Group activities including a guided Castle Tour, Walk & Talk, Escape Game



The TUM doctoral model

The TUM doctoral model ensures **independent research** while providing a **structuring framework** and extensive training opportunities. Each member can design the doctorate based on his*her individual needs.



International research phase

The TUM-GS supports **international and intercultural collaboration** in research and the creation of personal networks. We offer individual mobility funding, as well as international exchange programs.



TUM-GS International Facts and Figures

(statistics 2023)



up to **3,000€**
individual mobility funding

>700,000€
TUM-GS annual mobility budget



300+
international
conferences funded p.a.



100+
research stays
funded p.a.



USA
top 1 destination

Internationalization TUM & TUM-GS

- EuroTech Alliance
- International locations and strategic initiatives
- Flagship partners
- TUM-GS International Exchange Partners



The TUM doctoral model

The TUM doctoral model ensures **independent research** while providing a **structuring framework** and extensive training opportunities. Each member can design the doctorate based on his*her individual needs.

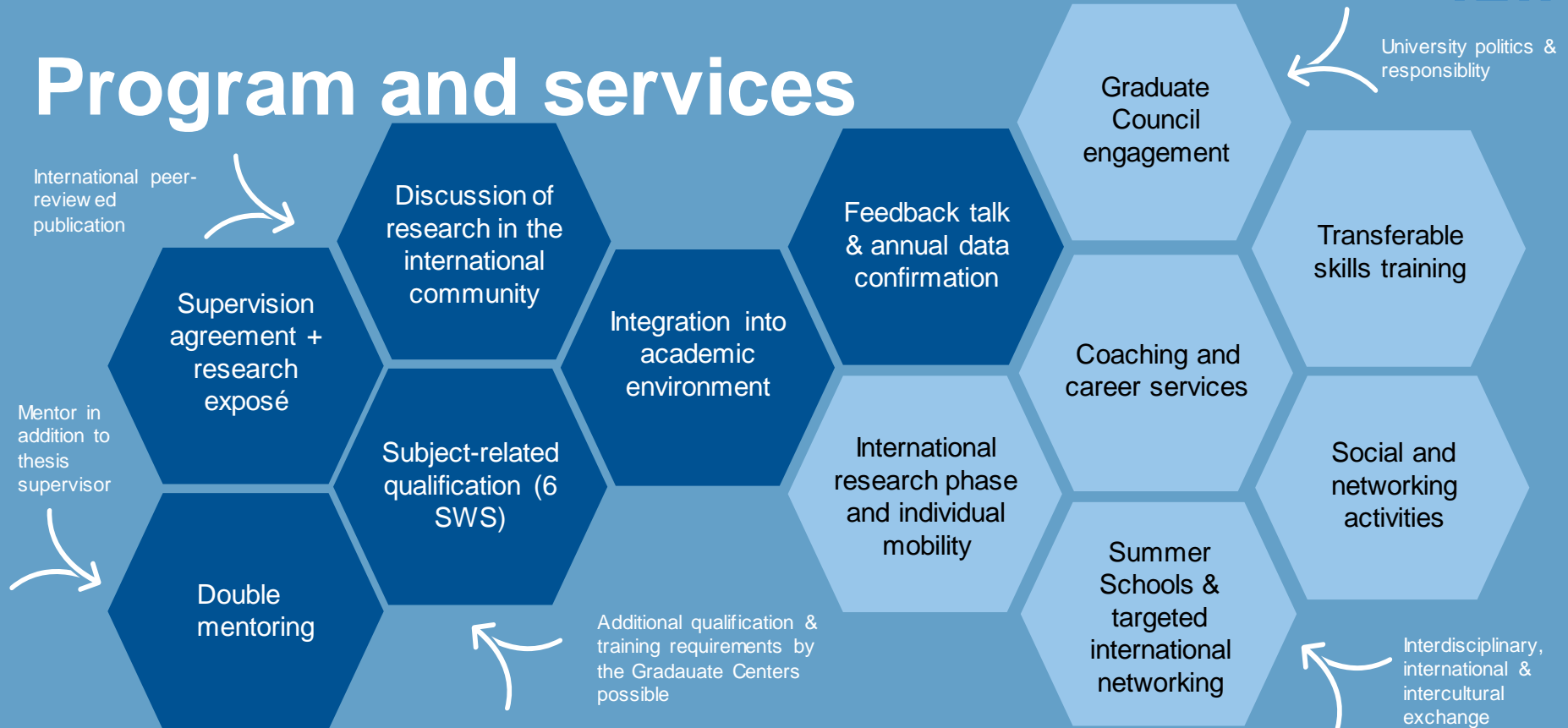


Career support

Through coaching, mentoring and various career workshops and information events, doctoral candidates receive **individual support** for their career plans in academia, industry, science management etc.



Program and services



TUM-GS Welcome Office

Contact the Welcome Office for information about:

- **Application and funding options**
- **Doctoral admission process** and required documents
- **Accommodation and living in the Greater Munich Area**
- **TUM-GS services, programs**, German language courses etc.
- **Cultural and networking events** for international doctoral candidates
-and many more

Learn more and stay in touch!

Please do not hesitate to contact us via welcomeoffice@gs.tum.de



Visit our website
www.gs.tum.de



Subscribe to our
newsletters



Follow
[@tum.graduateschool](https://www.instagram.com/tum.graduateschool)
on Instagram



Follow TUM
Graduate School
on LinkedIn